

Miscellaneous

Mailing of Cremated Remains by USPS Express Mail	\$145
Thank You Cards (25)	\$25
Memorial Folders/Prayer Cards (100)	\$100
Guest Book	\$95
Hair Dresser	\$75
Scattering of Cremated Remains in the Gulf of Mexico	\$195
Delivery of Cremated Remains to Bay Pines	\$145
Delivery of Cremated Remains to Florida National Cemetery	\$195
Courier Fee	\$65
Insurance Assignment Fee	Greater of 4.5% of contract or \$150
Weekend or Evening Funeral/Memorial Service	\$300
Additional Chapel Time (for 2 additional hours)	\$575
Air Transit Case/Combo Unit	\$295
Embalming with Autopsy (or minimum preparation).....	additional \$295
Embalming or Cremation for Client in Excess of 300 lbs.	additional \$175
Casketed remains transport to/from the Tampa Airport	\$225
Mileage charges	\$3.00 per loaded mile after 50 miles
Arrangements at National Cemetery	\$145
Anatomical Board Body Donation (UCF Orlando Medical School)	\$1700
Full body donation for medical science. (Financial rebates may apply from the medical school.	
DVD Production	\$150
Extra copies of DVD	\$25 ea.
Refrigeration Fee & Storage of Decedent over 30 days	\$50 per day

Merchandise

We offer caskets from Matthews Aurora Casket Company. They range in price from \$995 to \$25,000. A complete price list will be provided at the funeral home.

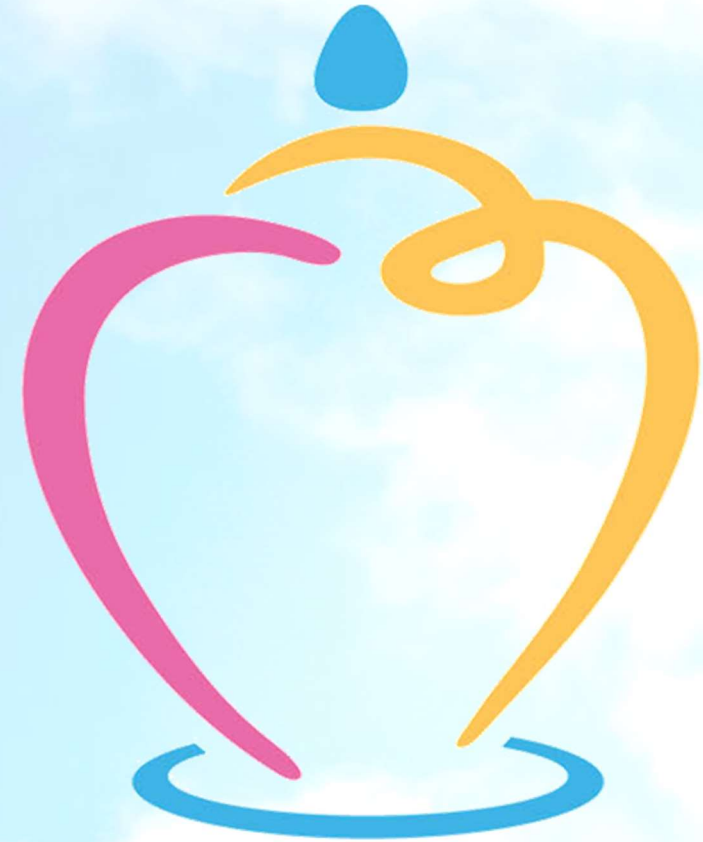
We offer burial vaults from Wilbert Vault Company and other providers. Prices range from \$1065 to \$20,000. A complete price list will be provided at the funeral home.

This general price list is applicable for the greater West Central Florida area including Citrus, Hernando, Hillsborough, Manatee, Pasco, Pinellas, Polk,

15381 Roosevelt Blvd. • Clearwater, FL 33760 • 727-500-1707
BestCareCremation.com

General Price List

Prices Effective March 1, 2024



BestCareCremation

For those who just want cremation

Professional Services

Minimum Services of the Funeral Director and Staff\$1695

In order to provide the finest service possible, we maintain a staff of trained, experienced and appropriately licensed personnel which are available 24 hours every day to respond to your call. This fee includes our arrangement interview with your family, coordination of your plans, securing and recording the death certificate and disposition permit. Coordination of plans with cemetery, crematory and/or other parties involved in the final disposition. This fee for our services will be added to the total cost of the funeral arrangement you select (This fee is already included in our charges for direct cremations, immediate burials, and forwarding or receiving of remains.)

Embalming \$690

Except in certain special cases, embalming is not required by law. Embalming may be necessary, however, if you select certain funeral arrangements, such as a funeral with viewing. If you do not want embalming, you usually have the right to choose an arrangement that does not require you to pay for it, such as direct cremation or immediate burial.

Other Preparations of the Body \$200

This includes any dressing, casketing, cosmetizing or handling of the body other than embalming or shelter of remains. *(May be required for some Final Goodbye viewings.)*

Crematory Fee (up to 300 lbs.) \$395

Use of Facilities, Staff, or Equipment

- For Funeral/Memorial Service \$575
- For Visitation \$575
- For Graveside Funeral \$575

Automotive Equipment

Transportation of Remains to Funeral Home \$575

The care and removal of the decedent to our offices from a local residence, hospice, any care facility or in the greater West Central Florida area.

Hearse \$575

Traditional Funeral as Shown \$4860

The goods and services shown are those we can provide to our customers. You may choose the items you desire. However, any arrangements you select will include a charge for our services. If legal or other requirements mean you must buy any items you did not specifically ask for, we will explain the reason in writing on the statement we provide describing the funeral goods and services you selected. This list does not include prices for certain items that you may ask us to purchase for you, such as cemetery services, flowers, and newspaper notices. The price for those items will be shown on the statement describing the funeral good and services you select.

Direct Cremation Without Ceremony.....\$985

Basic services of the funeral director and staff, filing of the death certificate, transportation from the place of death to our care center, refrigeration of the remains and the cremation process.

Direct Cremation with alternative container provided by funeral home..... \$985

Direct Cremation with alternative container provided by the family..... \$960

Alternative Container \$25

Cremation with Final Goodbye (5 people for 20 minutes) \$1185

Basic services of the funeral director and staff, filing of the death certificate, transportation from the place of death, and final goodbye viewing for the immediate family in the cremation container prior to cremation using our viewing area.

Cremation Followed by Memorial Service (2 hours) \$1485

Basic services of the funeral director and staff, transportation from place of death to our care center, coordination and supervision of memorial service at our chapel, 100 memorial folders, guest register book, 25 thank you notes, cremation container and crematory fee.

Traditional "Open Casket" Funeral Followed by Cremation (2 hours)\$2945

Basic services of the funeral director and staff, transportation from place of death to our care center, coordination and supervision of memorial service at our chapel, 100 memorial folders, guest register book, 25 thank you notes, embalming, cosmetic preparation of the body, use of ceremonial casket (including cremation container) visitation prior to the service, and crematory fee.

Graveside Funeral at any Local (within 50 miles) Cemetery \$3445

Basic services of the funeral director and staff, transportation of remains to our funeral home, 20 gauge steel casket (choice gray or brown), graveside funeral, 100 memorial folders, guest book, 25 thank you cards. No viewing, no embalming.

Direct Burial Without Ceremony

Basic services of the funeral director and staff, transportation of remains from place of death, care and shelter of remains and local transportation to cemetery. Does not include embalming, viewing or services.

A. Direct Burial with casket provided by purchaser..... \$1445

B. Direct Burial with gray cloth covered wood casket.....\$2040

Forwarding Remains to Another Funeral Home.....\$2295

Minimum services of staff, transportation from place of death, embalming or sanitary care, and transportation to Tampa International Airport. Does not include air-cargo charges, merchandise or use of facilities for visitation or ceremonies prior to forwarding the remains.

Receiving of Remains from Another Funeral Home..... \$1895

Minimum services of staff, transportation from Tampa International Airport, temporary protective shelter of the remains at our facility and transportation to the cemetery. It does not include any merchandise or other services.